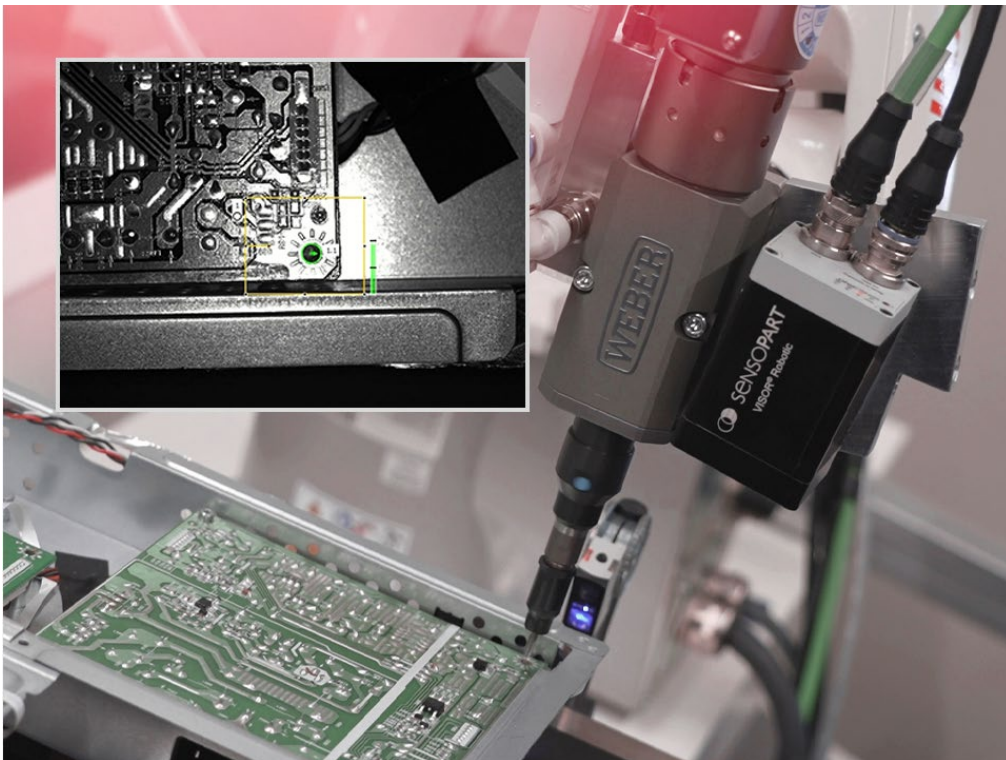


Information provided by SensoPart Industriesensorik GmbH, Gottenheim near Freiburg/Breisgau

VISOR® Software Update 2.12: Smarter Detection. Easier Configuration. **New Shape Find and SensoConfig Web streamline setup and boost performance**

SensoPart, a leading manufacturer of vision sensors, has released a powerful new software update for its proven VISOR® sensor series. Available free of charge, the update introduces major functionality upgrades, including automatic geometric shape detection, precise circle measurement, and a new browser-based configuration interface.

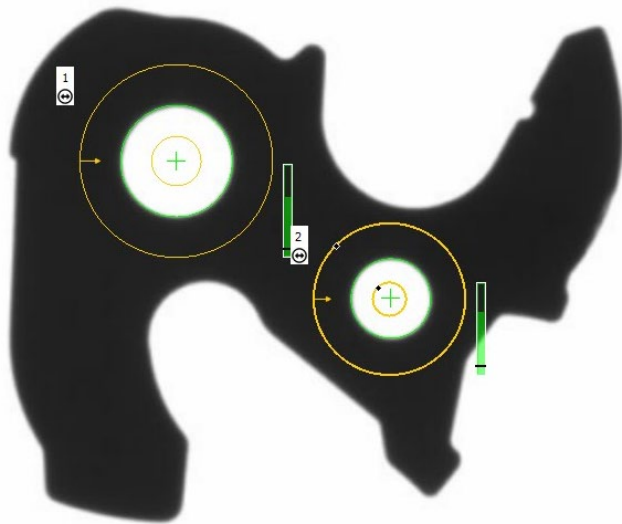
New “Shape Find” Detector: Quickly and Easily Identifies Common Geometries



The new **Shape Find detector** enables fast and robust detection of geometric shapes such as rectangles, squares, and circles. VISOR® sensors can automatically identify all matching shapes within the image—or search specifically for user-defined parameters, such as a circle with a preset diameter in millimeters.

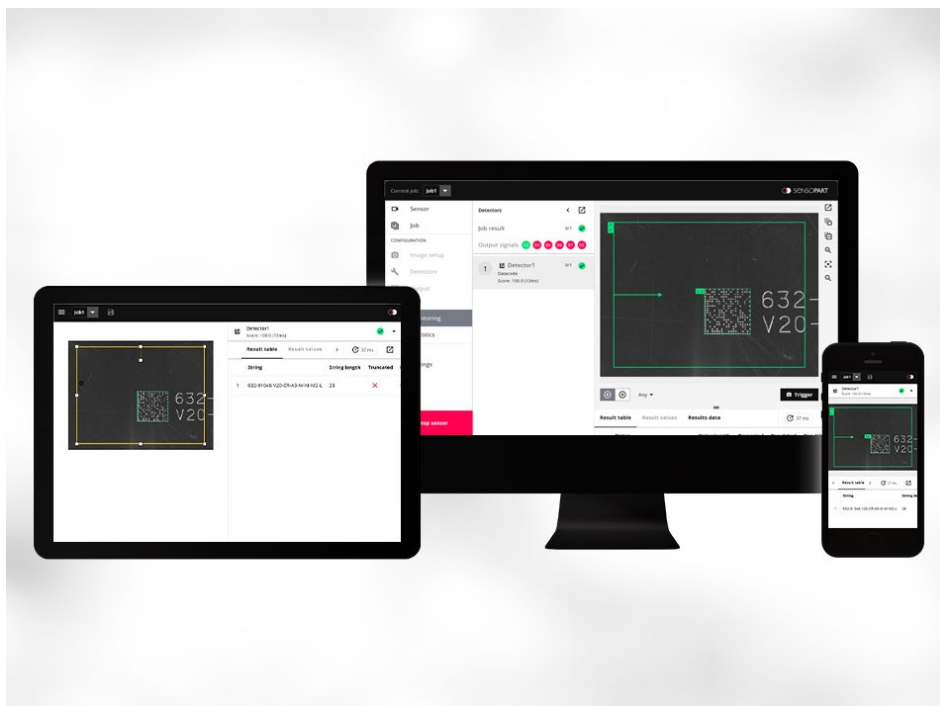
This feature streamlines setup and saves valuable time, making it ideal for tasks like automated screw positioning or shape recognition in automotive and electronics manufacturing.

New “Caliper, Circle” Tool: Delivers Accurate Circle Measurement



The **Measuring Slide, Circle** detector—also known as “**Caliper, Circle**”—precisely measures round features such as bores and washers. It reliably determines the diameter and center point of complete or partial circles. Perfect for metalworking, assembly, and handling tasks, it ensures accurate measurement of holes or differentiates between similar-looking parts like washers, O-rings, and seals.

New “SensoConfig Web”: Simple Setup Without Software Installation



SensoConfig Web is the new browser-based configuration tool for VISOR® code readers. With no installation required, users can configure devices easily on a PC, tablet, or smartphone. An intuitive wizard with automatic code detection guides users step-by-step, offering a convenient and platform-independent setup experience.

Additional Highlights in Version 2.12

Automatic Brightness Control:

VISOR® now automatically adjusts image capture settings in response to changing lighting conditions or varying surface materials—ensuring consistent and reproducible image quality.

Up to 25x Faster AI Classification:

The **Classification AI** tool in the VISOR® XE series is now up to 25 times faster. It can classify up to 200 object categories in just 10 milliseconds per evaluation. Setup takes only seconds—speeding up applications that require rapid, reliable differentiation between “OK” and “not OK” parts.

Smarter Than Ever: VISOR® Software 2.12 Now Available

Software version 2.12 is available now for download. With enhanced functionality and performance, Sensopart continues to set new benchmarks in industrial vision and reinforce its position as an innovation leader.

© Sensopart Industriesensorik GmbH 2025, Gottenheim
Publication free of charge with reference to source

About Sensopart Industriesensorik GmbH

Sensopart develops, manufactures, and distributes a wide range of innovative sensors for factory automation. The company specializes in optoelectronic sensors and vision sensors, which are used in industrial applications such as object and color detection, distance measurement, code reading, and robotics. All products are developed and manufactured in Germany at Sensopart's facilities in Gottenheim (near Freiburg) and Wieden in the southern Black Forest. With eight subsidiaries and a global network of more than 40 international sales partners, Sensopart serves customers around the world.

Founded in 1994, this family-owned, mid-sized company is known for its flexibility, innovation, and high-performance solutions. Sensopart has earned numerous industry accolades, including first place in the Automation Award and multiple honors from the German Sensor Application Award.

For more information, visit: www.sensopart.com